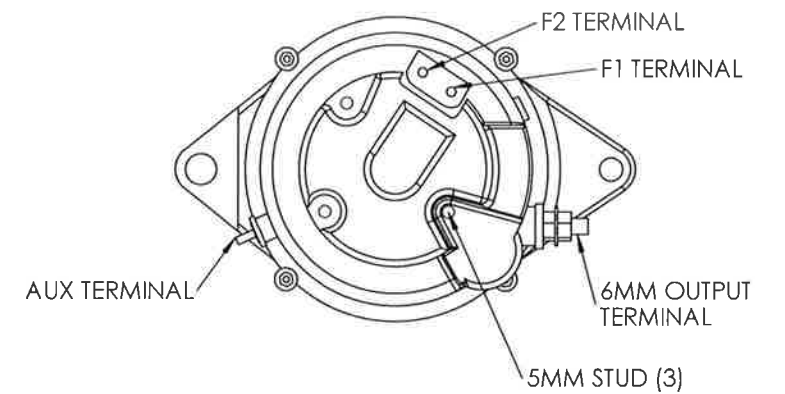
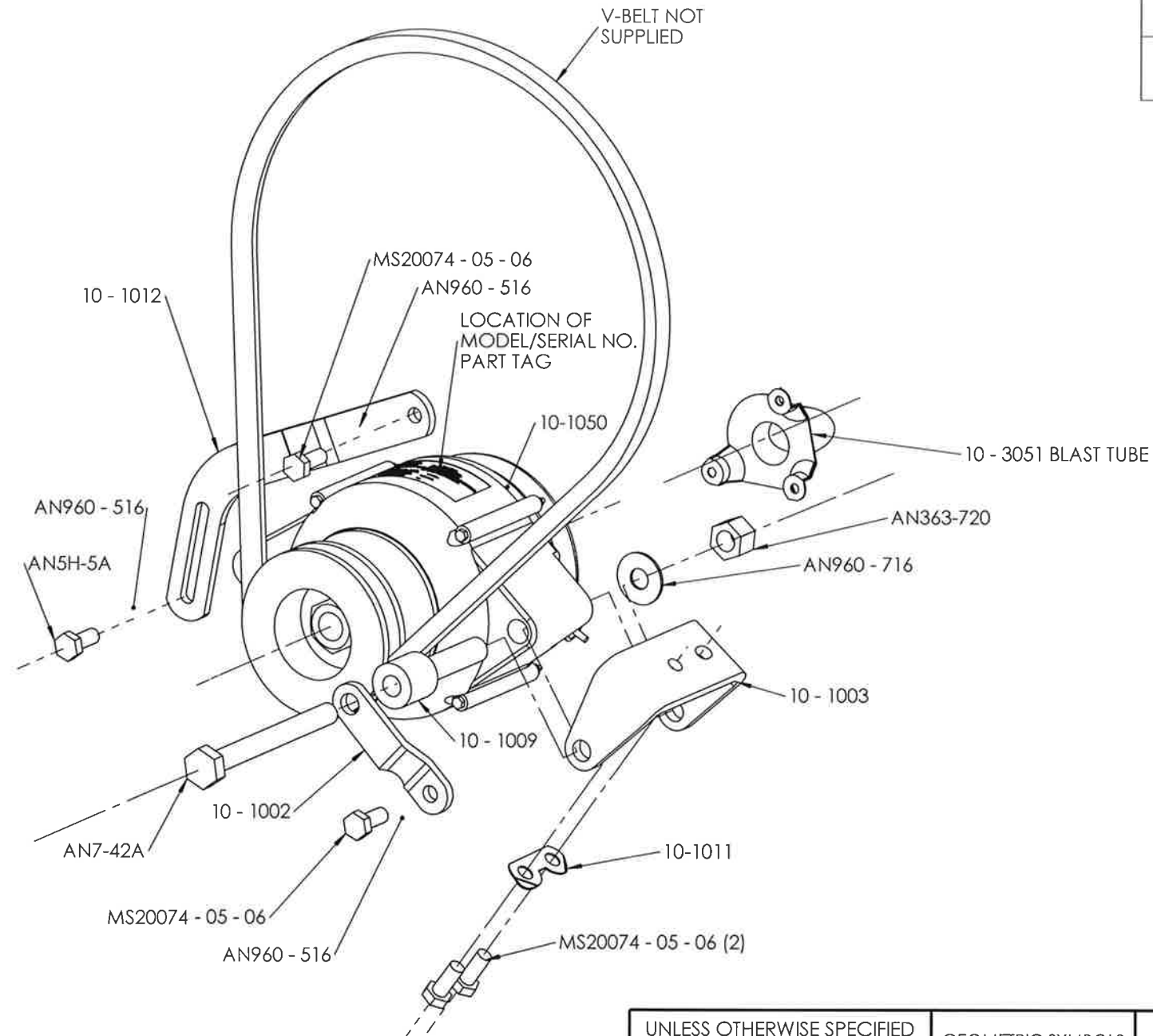


NOTE1: SAFETY WIRE (2) TENSION ARM BOLTS (MS20074 - 05 - 06 & AN5H-5A) WITH .032" SAFETY WIRE.

REVISIONS				
EN	REV.	DESCRIPTION	BY	DATE
1408063	A	FIRST RELEASE INTO HET DESIGN DATA	BJ	9/2/14
1408064	B	1) TITLE BLOCK WAS PLANE-POWER, LTD. 2) "HARTZELL ENGINE TECHNOLOGIES, LLC" WAS "PLANE-POWER, LTD" 3) "SHEET 2" WAS "REVERSE SIDE" 4) ADDED 10-1031 CALLOUT TO DATA TAG 5) MODEL NO. 10-1050 WAS AL12-70 6) REMOVED DATA TAG MATERIAL NOTE	BJ	9/2/14
1411038	C	1) ON SHEET 1, CHANGED "CONTINUED AIRWORTHINESS" TO "MAINTENANCE"; 2) ON SHEET 2, CHANGED "INSTRUCTIONS FOR CONTINUED AIRWORTHINESS" TO "MAINTENANCE INSTRUCTIONS"	OKQ	11/18/14



**Plane-Power** FAA PMA  
HARTZELL ENGINE TECHNOLOGIES, LLC  
For eligibility see [www.plane-power.com/catalog](http://www.plane-power.com/catalog)

**MODEL NO. 10-1050**  
**SERIAL NO. 2V-YWWSN**  
**VOLTAGE 12**

INSTALLATION AND MAINTENANCE INSTRUCTIONS ON PAGE 2

SPECIFICATION CLASSIFICATION		
CLASSIFICATION	DIMENSION CONVENTION	NOTE NO CONVENTION
CRITICAL	<XX XX>	<#>
MAJOR	[XX XX]	[#]
MINOR	XX.XX	#
REFERENCE	(XX.XX)	(#)

UNLESS OTHERWISE SPECIFIED  
DIMENSIONS ARE IN INCHES AND APPLY AFTER HEAT TREAT AND PLATING  
.X = ±.015  
.XX = ±.010 ANGLES ±1°  
.XXX = ±.005  
BREAK ALL EDGES AND MACHINE ALL INSIDE CORNER FILLETS .015 MAX. SURFACE FINISH

THIS DRAWING CONTAINS INFORMATION THAT IS CONFIDENTIAL AND PROPRIETARY TO HARTZELL ENGINE TECHNOLOGIES. THIS DRAWING IS FURNISHED ON THE UNDERSTANDING THAT THE DRAWING AND THE INFORMATION IT CONTAINS WILL NOT BE COPIED OR DISCLOSED TO OTHERS EXCEPT WITH THE WRITTEN CONSENT OF HARTZELL ENGINE TECHNOLOGIES. WILL NOT BE USED TO THE DETRIMENT OF HARTZELL ENGINE TECHNOLOGIES, AND WILL BE RETURNED UPON REQUEST BY HARTZELL ENGINE TECHNOLOGIES.

GEOMETRIC SYMBOLS PER ANSI Y14.5	SCALE	NTS
FLATNESS STRAIGHTNESS ROUNDNESS CYLINDRICITY PROFILE PERPENDICULARITY POSITION CONCENTRICITY SYMMETRY ANGULARITY PARALLELISM CIRCULAR RUNOUT TOTAL RUNOUT		

DRAWN	BJ	12/26/05
CHECKED	EAB	11/18/14
ENG.	OKQ	11/19/14
FINISH	N/A	
WEIGHT	N/A	
MATERIAL	SEE INDIVIDUAL PARTS	
SIZE	SH 1 OF 2	CODE ID 65PY1

**HARTZELL ENGINE TECHNOLOGIES** 2900 Selma Highway Montgomery, AL 36108

**AL12-70 INSTALLATION INSTRUCTIONS**

DRAWING NO. 10-1001 REV. C

## Part No. 10-1001

### Installation Instructions

1. Disconnect aircraft battery.
2. Install alternator per included drawing.
3. Refer to appropriate engine and airframe service manuals for belt tension and bolt torques.
4. Install battery wire with MS25171-2S terminal nipple on 6mm output terminal and torque to 50 in. lb.
5. Install ground wire to any of the three 5mm studs on rear of alternator and torque to 35 in. lb.
6. Install field wire with MS25171-1S terminal nipple to F1 terminal on rear of alternator and torque to 20 in. lb.
7. NOTE: F2 terminal to remain grounded with ground strap UNLESS aircraft voltage regulator is a type "A" regulator using a 2-wire field circuit, in this case remove and discard ground strap from F2 terminal and connect wiring from voltage regulator to F1 and F2 terminals, torque to 20 in. lb.
8. If aircraft is equipped with an "alternator out light" circuit, connect that wire to the AUX terminal and torque to 20 in. lbs. Other wise leave AUX terminal open.
9. Reconnect aircraft battery.
10. Start aircraft and check alternator output for proper operation.

### Maintenance Instructions

Annual / 100 hour inspections:

1. Remove drive belt and turn alternator rotor to check condition of bearings for abnormal noise or roughness.

5 year or 1,000 hour intervals:

1. Repeat: Annual / 100 hour inspection.
2. Remove field brush assembly and inspect brushes for excess wear. Replace brush assembly if brushes extend less than .250" from edge of brush holder case.