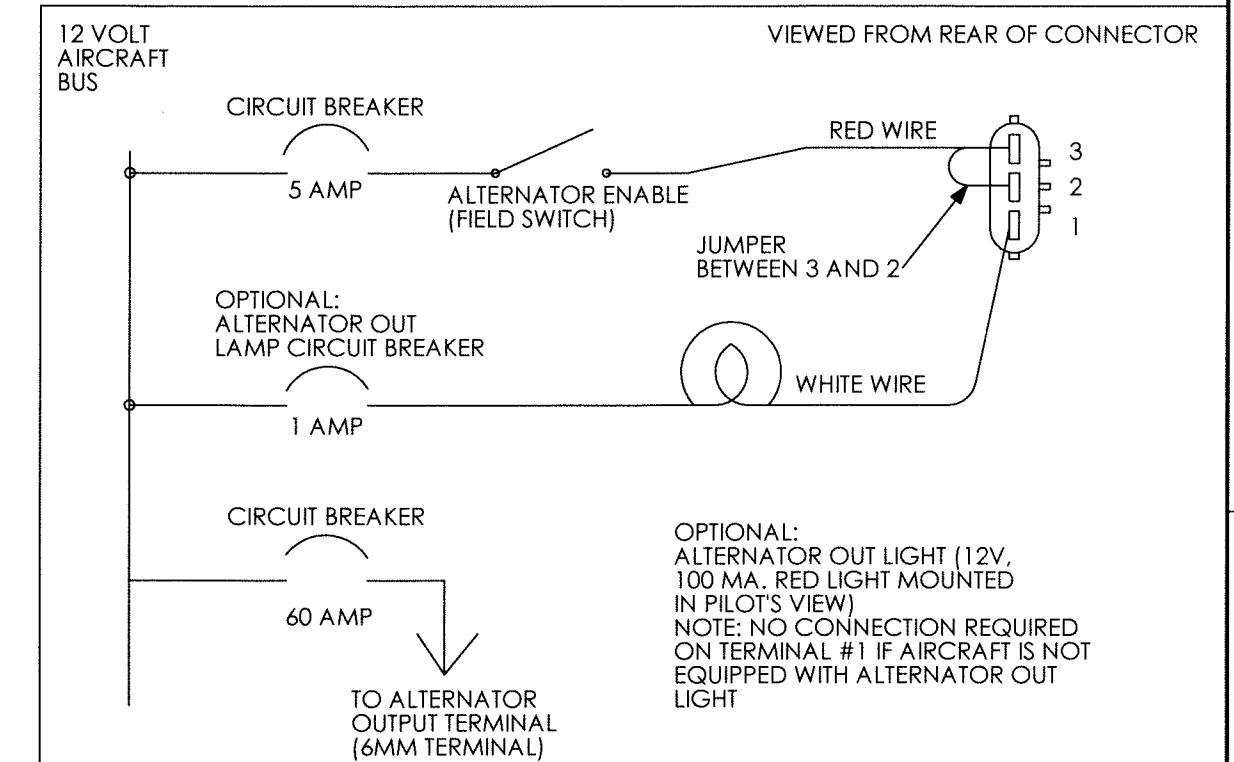
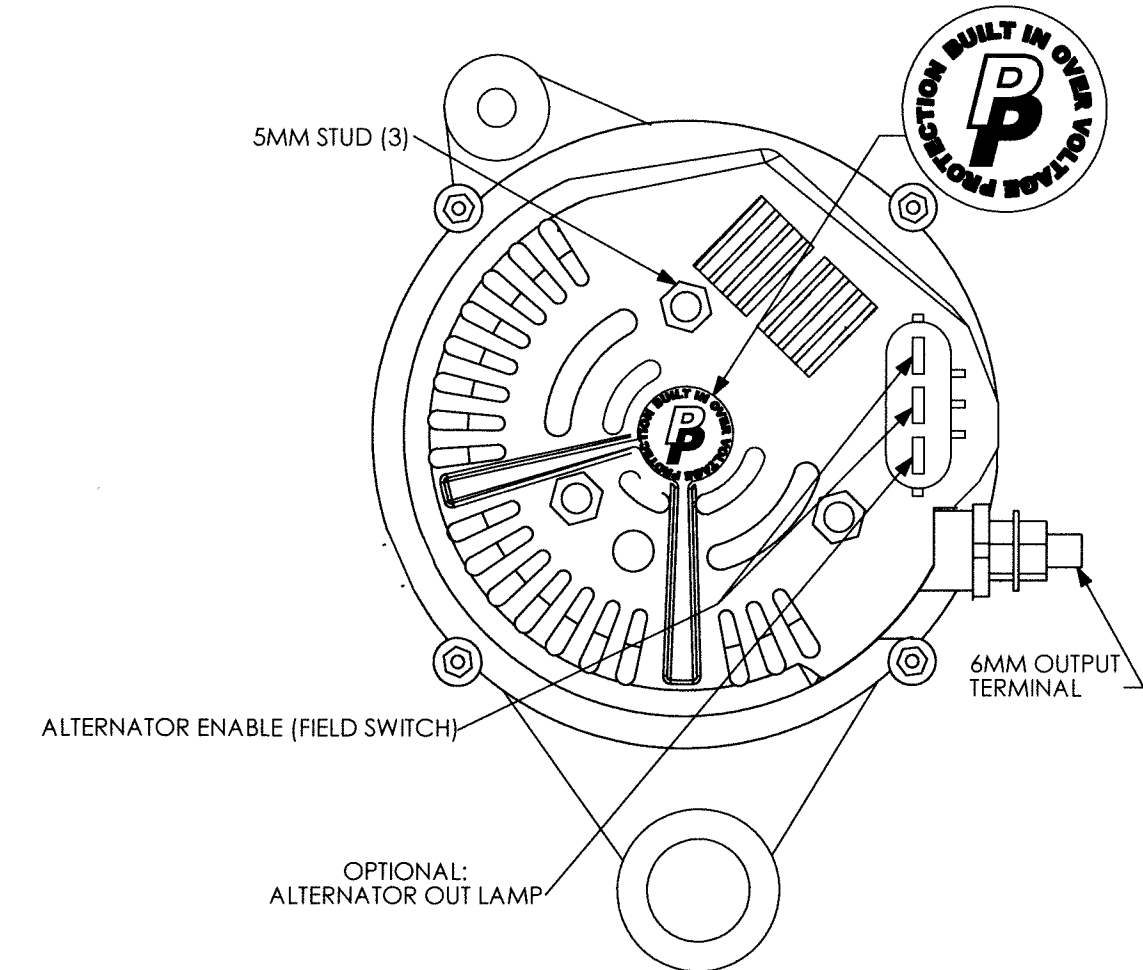
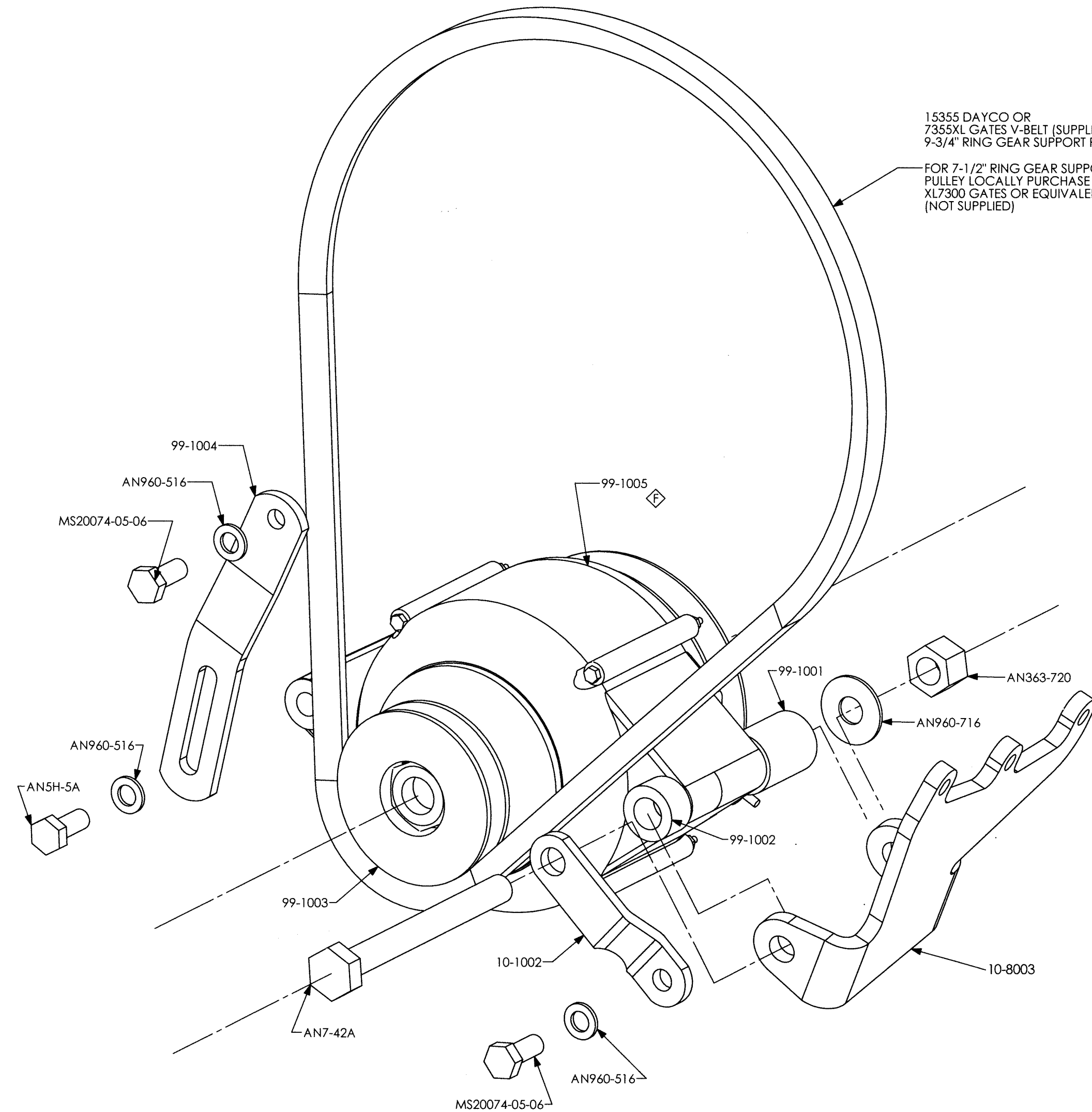


# 12 VOLT 60 AMP EXPERIMENTAL ALTERNATOR, W/INTERNAL VOLTAGE REGULATOR AND OVERVOLTAGE PROTECTION

NOTES:  
1. SAFETY WIRE (2) TENSION ARM BOLTS (MS20074-05-06 & AN5H-5A) WITH .032" SAFETY WIRE.

REVISIONS				
EN	REV.	DESCRIPTION	BY	DATE
1412019	F	1) FIRST RELEASE INTO HET DESIGN DATA; 2) HET TITLEBLOCK WAS PLANE POWER LTD.; 3) ON SHEET 2, "MAINTENANCE INSTRUCTIONS" WAS "INSTRUCTIONS FOR CONTINUED AIRWORTHINESS"; 4) ON SHEET 1, REMOVED "INSTALLATION AND..." ANNOTATION; 5) REVISED P/N TO 99-1005	OKQ	12/18/14



UNLESS OTHERWISE SPECIFIED		GEOMETRIC SYMBOLS PER ANSI Y14.5	DRAWN	BJ	07/11/05
DIMENSIONS ARE IN INCHES AND APPLY AFTER HEAT TREAT AND PLATING			CHECKED	EAB	12/18/14
.X = ±.015 .XX = ±.010 .XXX = ±.005 ANGLES ±1° BREAK ALL EDGES AND MACHINE ALL INSIDE CORNER FILLETS .015 MAX. SURFACE FINISH			ENG.	CMB	12/18/14
SPECIFICATION CLASSIFICATION		FINISH		N/A	
CLASSIFICATION	DIMENSION CONVENTION	WEIGHT		N/A	
CRITICAL	<XX.XX>	MATERIAL		SEE INDIVIDUAL COMPONENTS	
MAJOR	[XX.XX]	SIZE	SH 1 OF 2	CODE ID	65PY1
MINOR	XX.XX	DRAWING NO.		99-9900C	
REFERENCE	(XX.XX)	REV.		F	



AL 12-E160/C  
INSTALLATION INSTRUCTIONS

CLASSIFICATION	DIMENSION CONVENTION	NOTE NO. CONVENTION
CRITICAL	<XX.XX>	# >
MAJOR	[XX.XX]	#
MINOR	XX.XX	#
REFERENCE	(XX.XX)	(#)

THIS DRAWING CONTAINS INFORMATION THAT IS CONFIDENTIAL AND PROPRIETARY TO HARTZELL ENGINE TECHNOLOGIES. THIS DRAWING IS FURNISHED ON THE UNDERSTANDING THAT THE DRAWING AND THE INFORMATION IT CONTAINS WILL NOT BE COPIED OR DISCLOSED TO OTHERS EXCEPT WITH THE WRITTEN CONSENT OF HARTZELL ENGINE TECHNOLOGIES. WILL NOT BE USED TO THE DETRIMENT OF HARTZELL ENGINE TECHNOLOGIES, AND WILL BE RETURNED UPON REQUEST BY HARTZELL ENGINE TECHNOLOGIES.

SCALE NTS

## **Part No. 99-9900**

### **Installation Instructions**

1. Disconnect aircraft battery.
2. Install alternator per included drawing. Supply outside ram air to rear of alternator By the use of 1" scat tube or other suitable ducting.
3. Refer to appropriate engine service manual for belt tension and bolt torques.
4. Install battery wire with MS25171-2S terminal nipple on 6mm output terminal and torque to 50 in. lb.
5. Install connector in rear of alternator and wire in accordance with diagram on front of drawing
6. Reconnect aircraft battery.
7. Start engine, enable alternator and check for proper buss voltage.

### **Troubleshooting Instructions**

Alternator is equipped with an internal crowbar over-voltage protection circuit which will disable alternator if an over-voltage condition is sensed.

If 5-amp enable circuit breaker trips from an over-voltage condition in the alternator:

1. Reset 5-amp enable circuit breaker and continue operation.
2. If 5-amp enable circuit breaker trips again, land as soon as possible and investigate cause.

### **Maintenance Instructions**

Annual Inspection:

1. Remove drive belt and turn alternator rotor to check condition of bearings for abnormal noise or roughness.

5 year or 1000 hour intervals:

1. Repeat: Annual Inspection.
2. Remove field brush assembly and inspect brushes for excess wear. Replace brush assembly if brushes extend less than .250" from edge of brush holder case.